

# ACTIVITY SHEETS

**ACTIVITY SHEET 1. MERIDIANS, PARALLELS AND THE HEMISPHERES**

**ACTIVITY SHEET 2. THE STRUCTURE OF THE EARTH**

**ACTIVITY SHEET 3. THE WORLD'S MOST IMPORTANT RIVERS**

**ACTIVITY SHEET 4. AVERAGE ANNUAL TEMPERATURES ROUND THE WORLD**

**ACTIVITY SHEET 5. WORLD CLIMATES**

**ACTIVITY SHEET 6. PHYSICAL MAP OF ASIA**

**ACTIVITY SHEET 7. PHYSICAL MAP OF SPAIN**

**ACTIVITY SHEET 8. DRAW A BISON FROM ALTAMIRA**

**ACTIVITY SHEET 9. RIVER CIVILIZATIONS**

**ACTIVITY SHEET 10. EARLY GREECE**

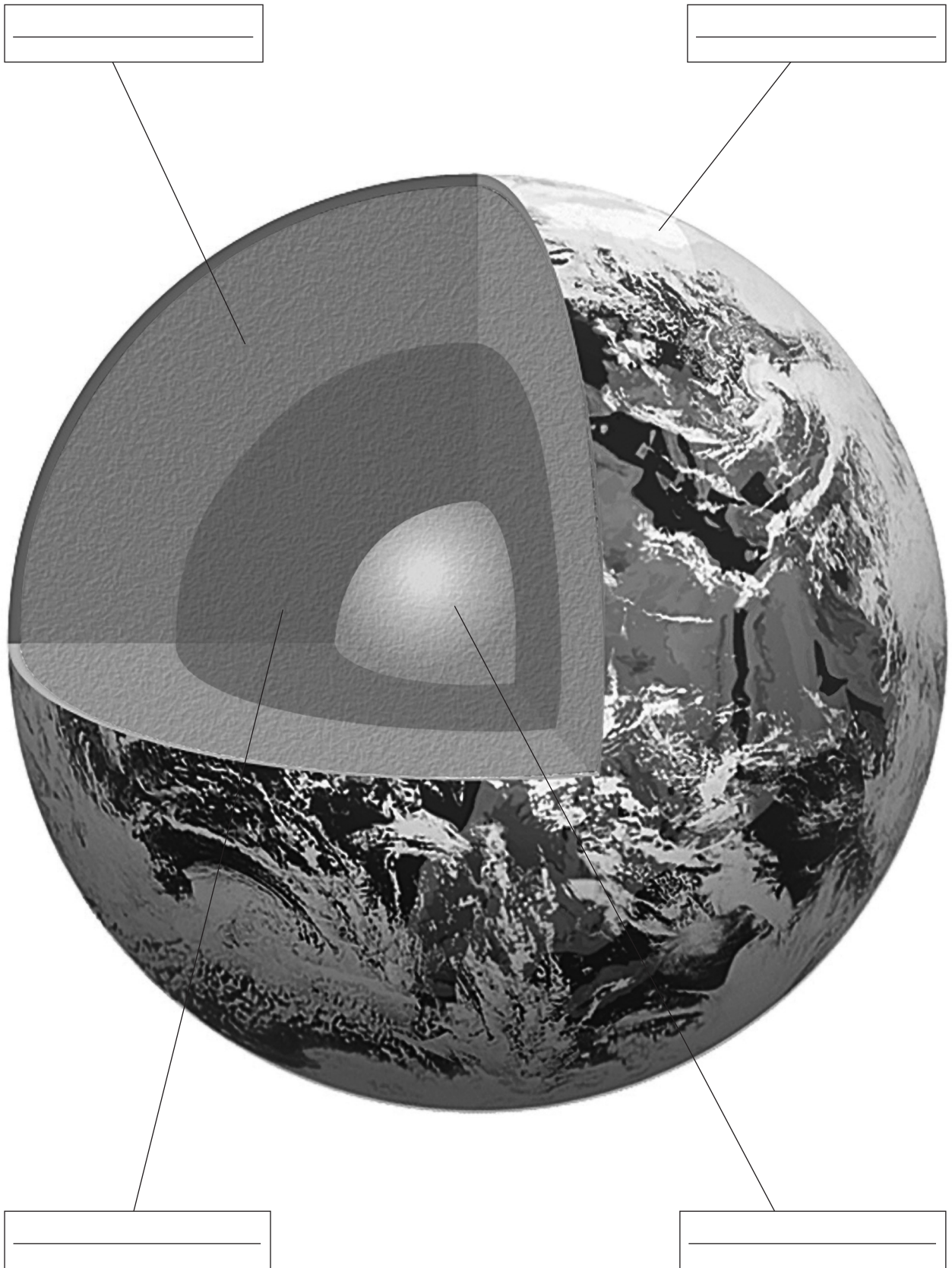
**ACTIVITY SHEET 11. THE ROMAN EMPIRE**

# ACTIVITY SHEET 1. MERIDIANS, PARALLELS AND THE HEMISPHERES

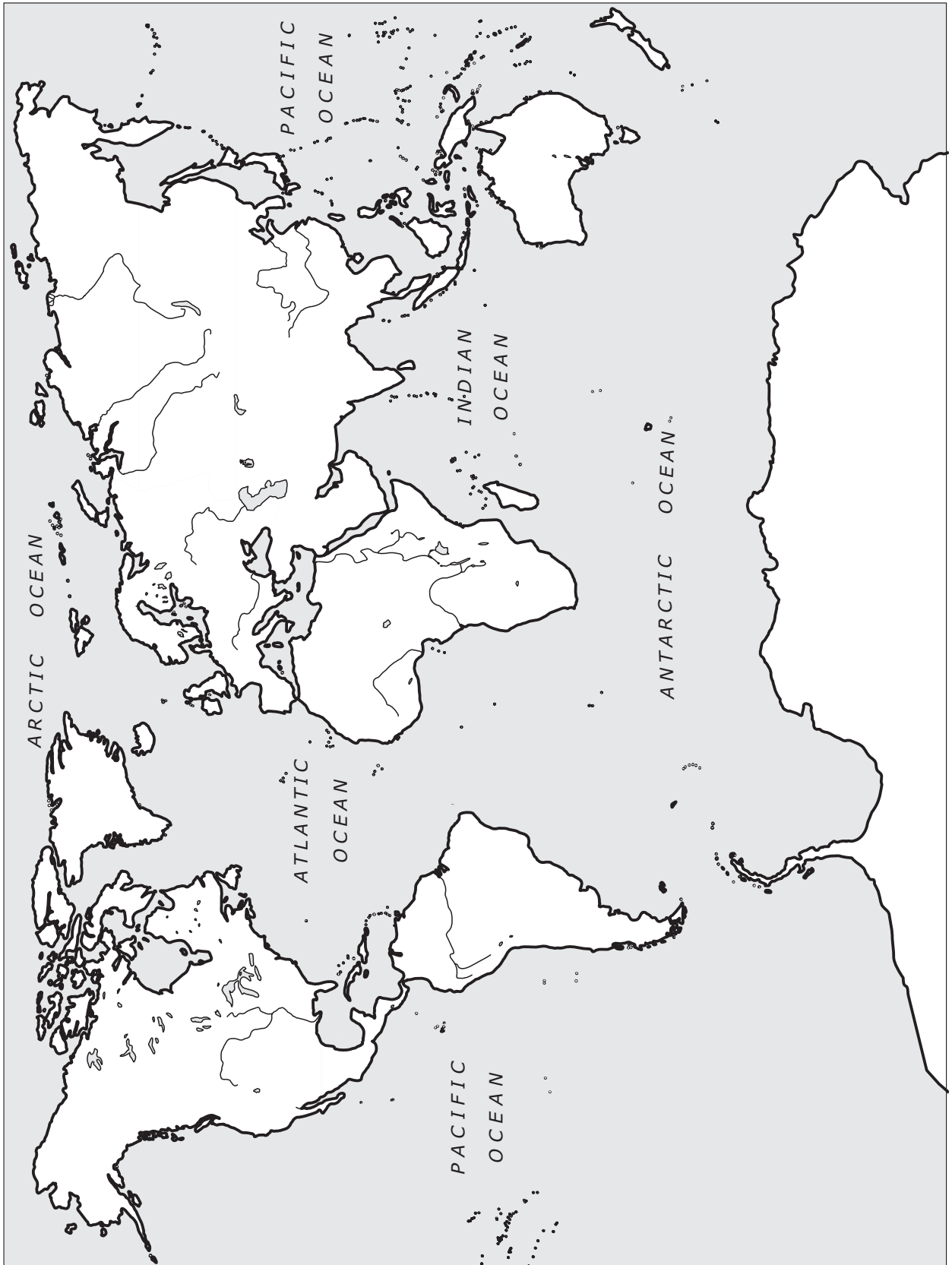


## ACTIVITY SHEET 2. THE STRUCTURE OF THE EARTH

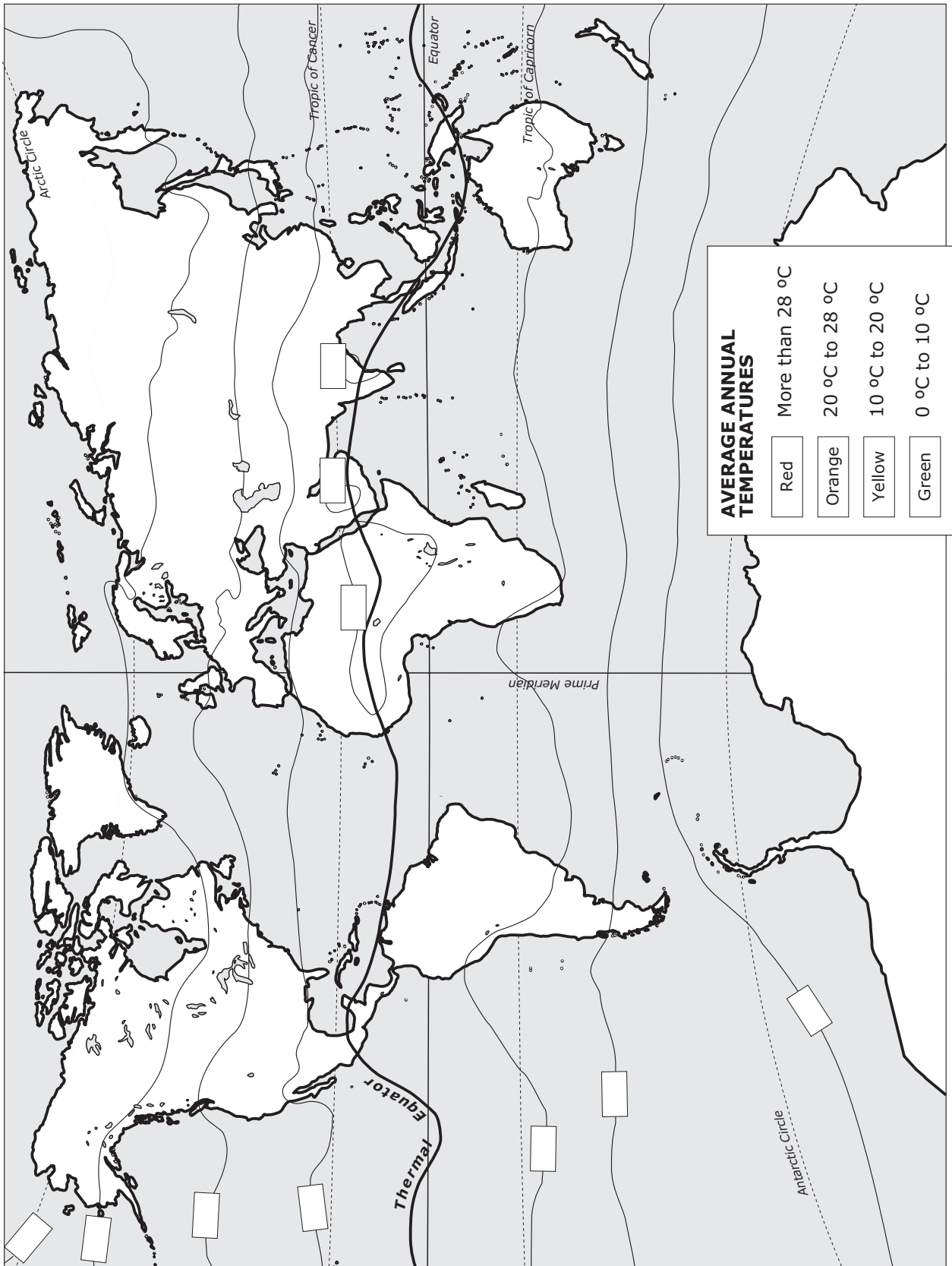
---



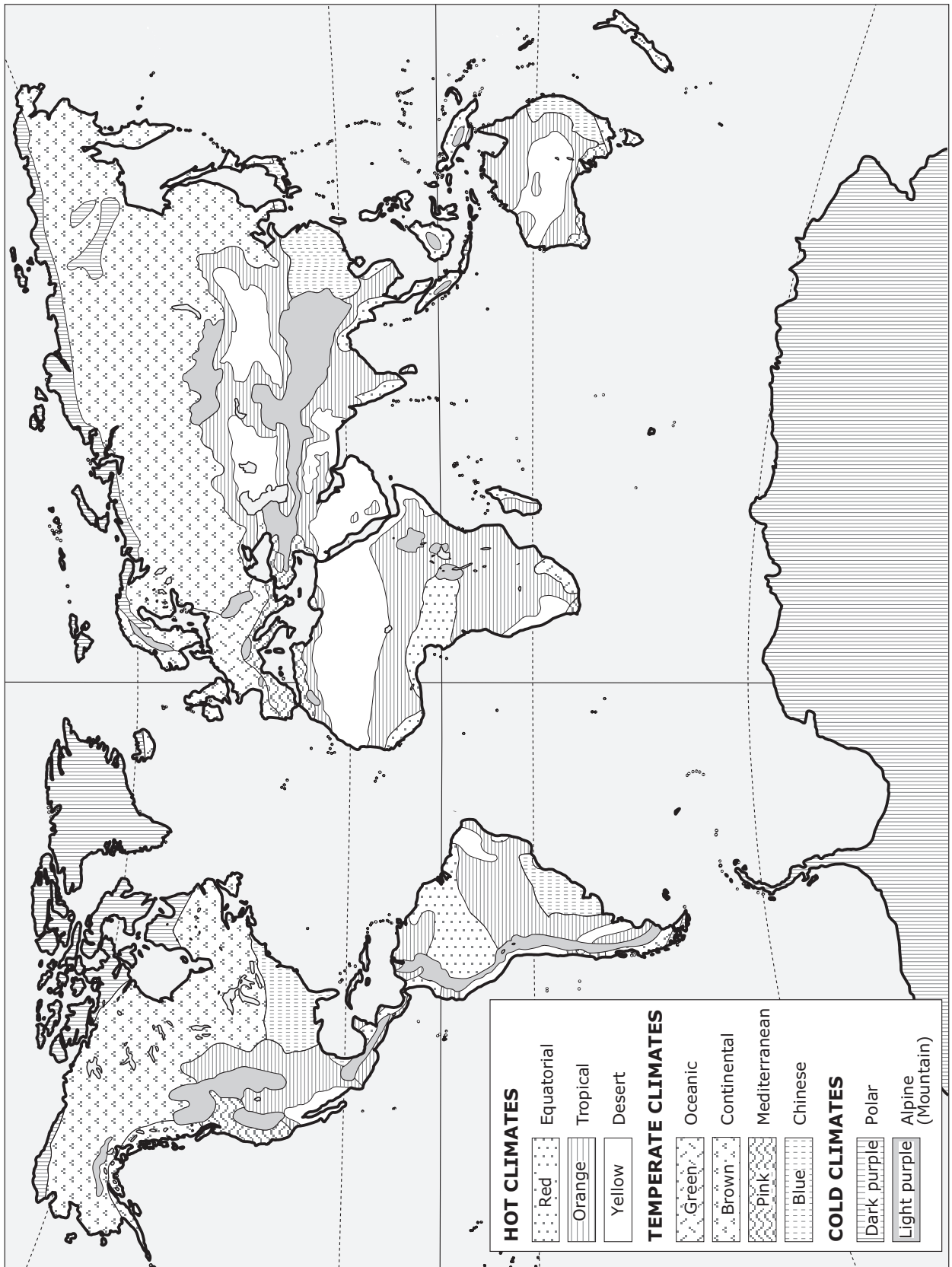
# ACTIVITY SHEET 3. THE WORLD'S MOST IMPORTANT RIVERS



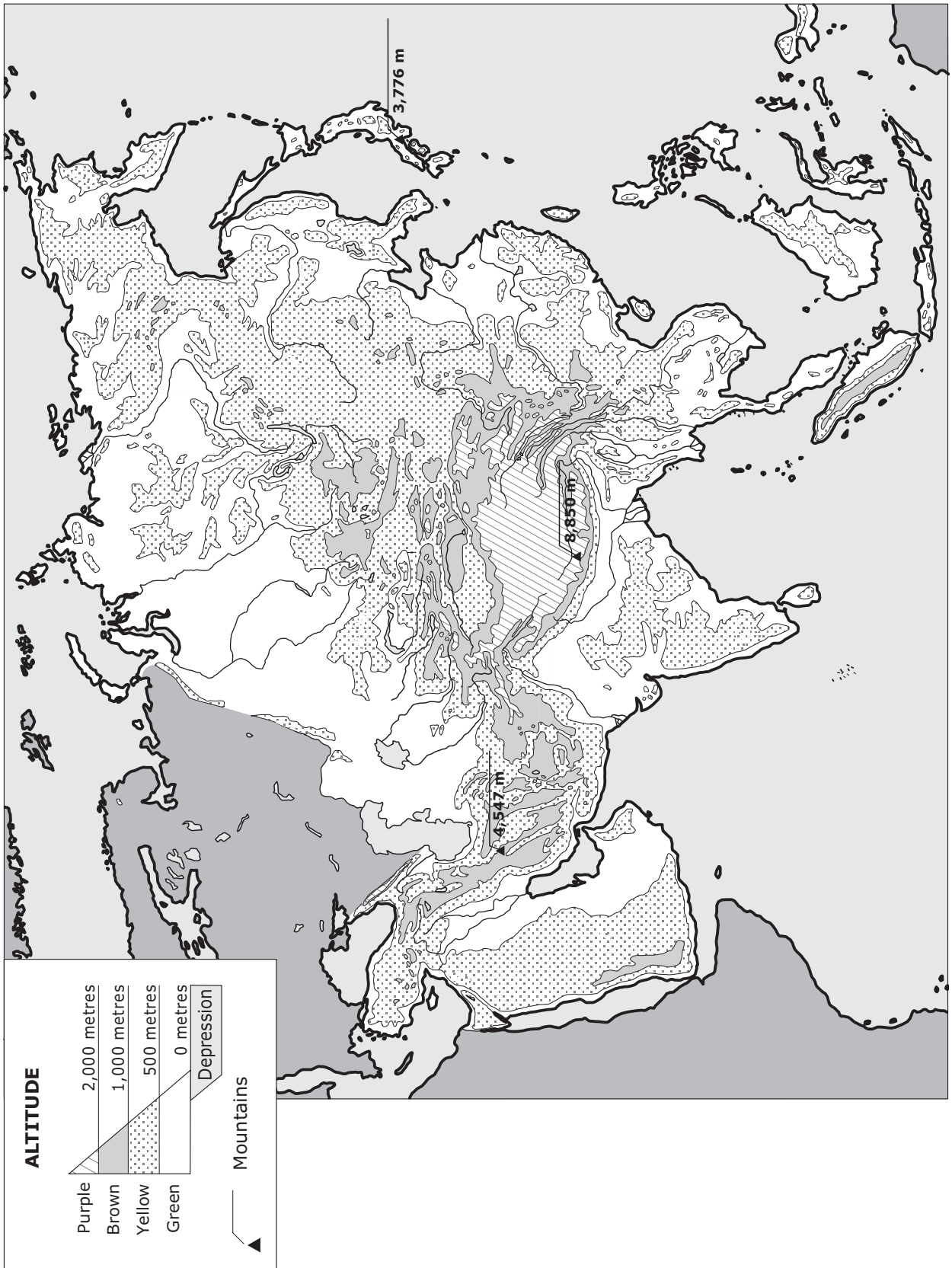
# ACTIVITY SHEET 4. AVERAGE ANNUAL TEMPERATURES ROUND THE WORLD



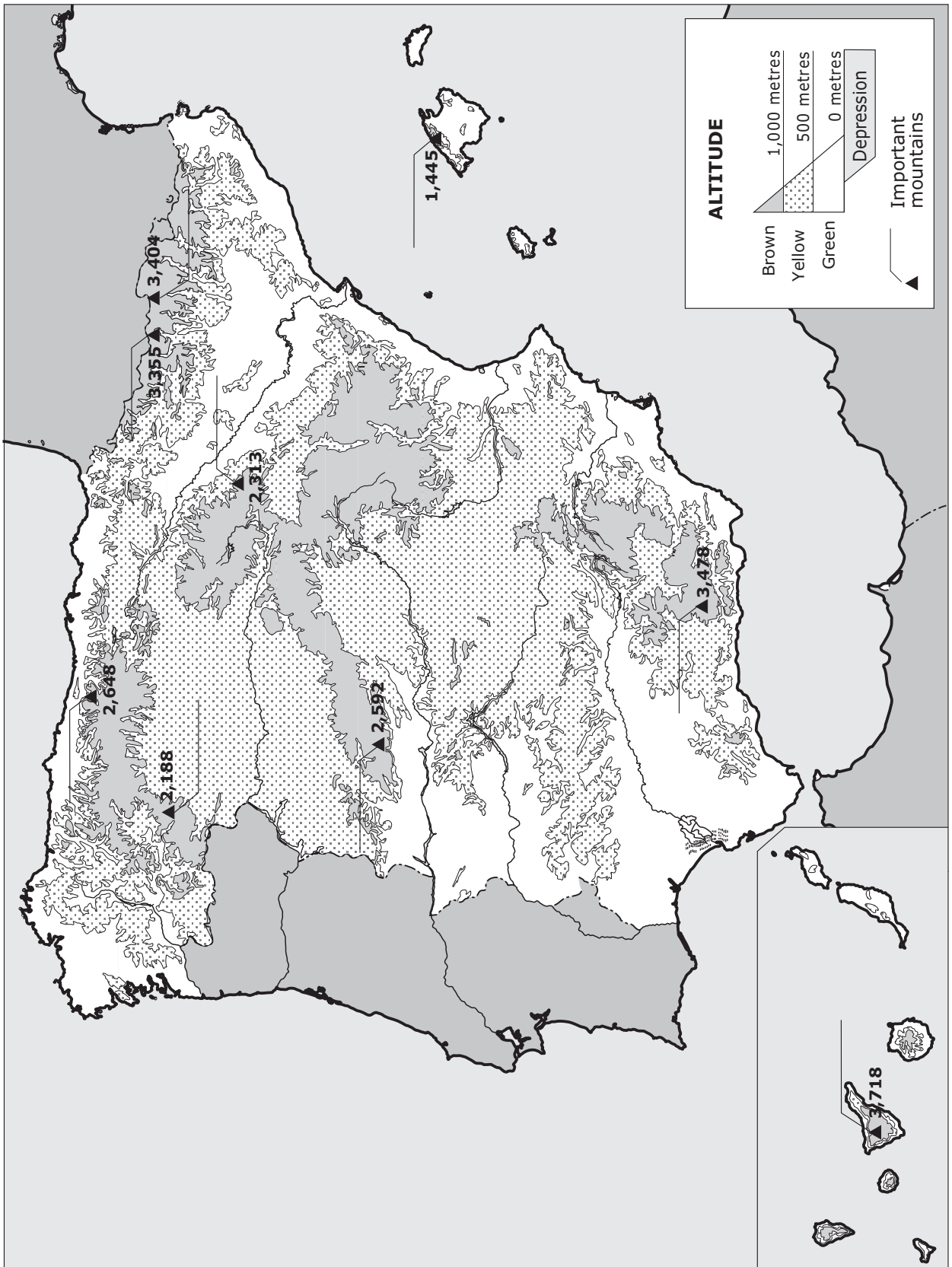
# ACTIVITY SHEET 5. WORLD CLIMATES



# ACTIVITY SHEET 6. PHYSICAL MAP OF ASIA



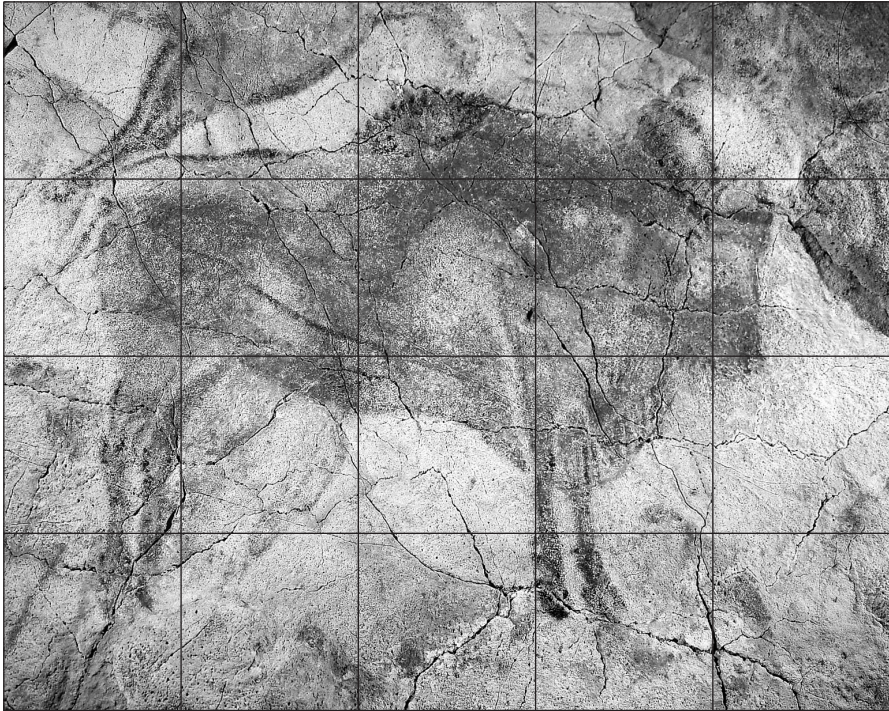
# ACTIVITY SHEET 7. PHYSICAL MAP OF SPAIN



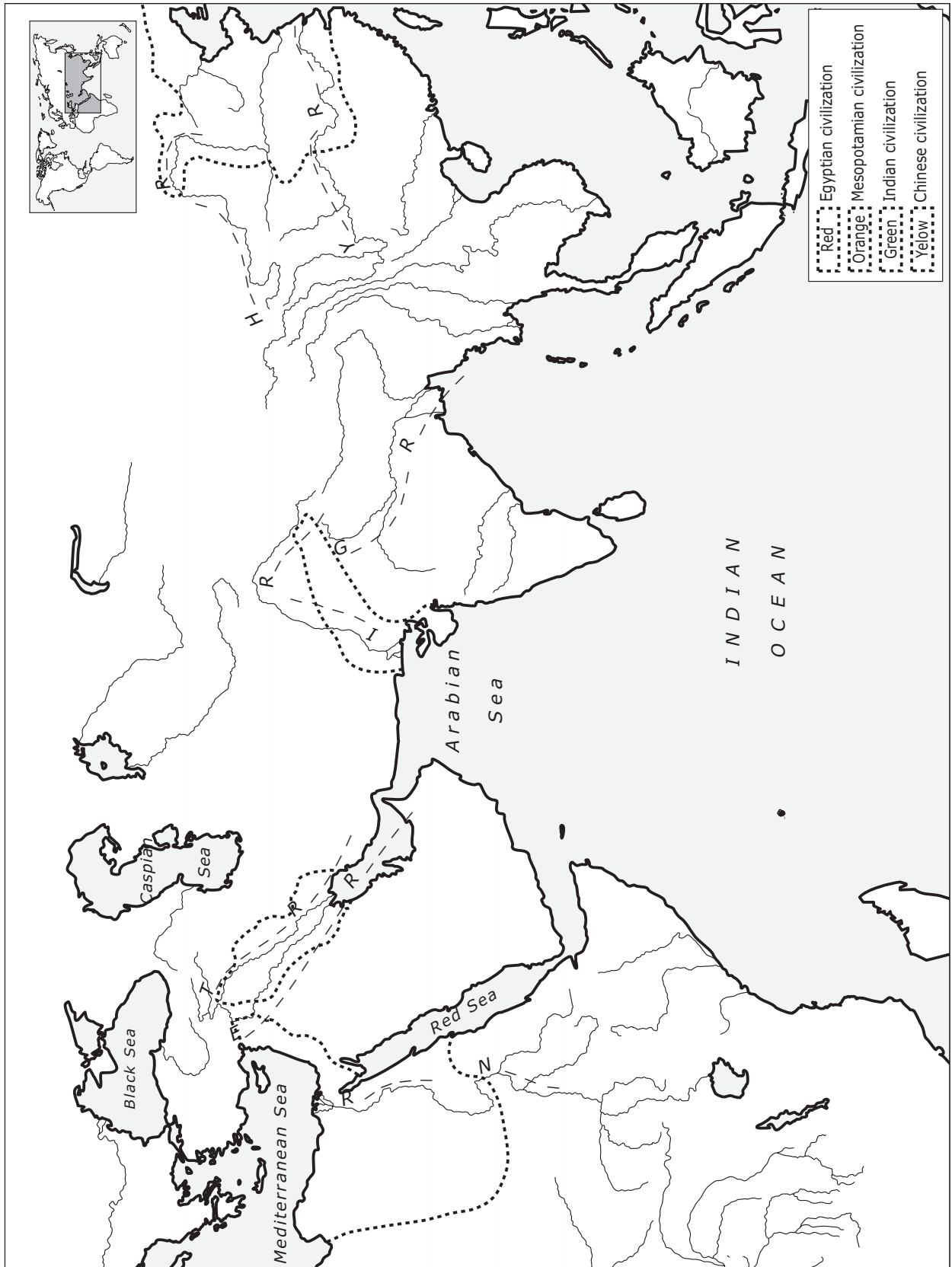


**ACTIVITY SHEET 8. DRAW A BISON FROM ALTAMIRA**

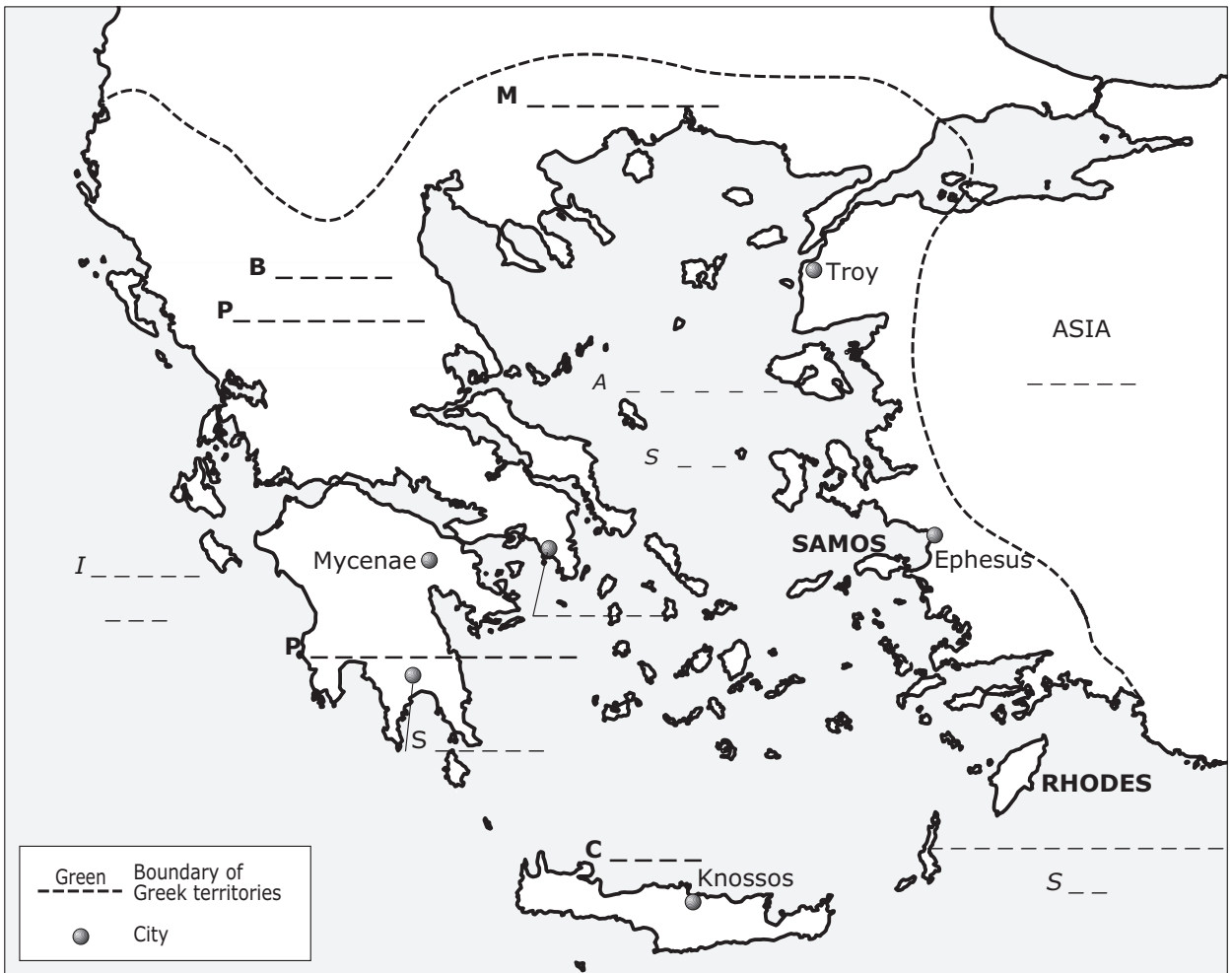
---




# ACTIVITY SHEET 9. RIVER CIVILIZATIONS



# ACTIVITY SHEET 10. EARLY GREECE



Modern countries which were Greek territories (in part or completely): —

---



---



---



---



---



---



---



---



---



# ACTIVITY SHEET 11. THE ROMAN EMPIRE

