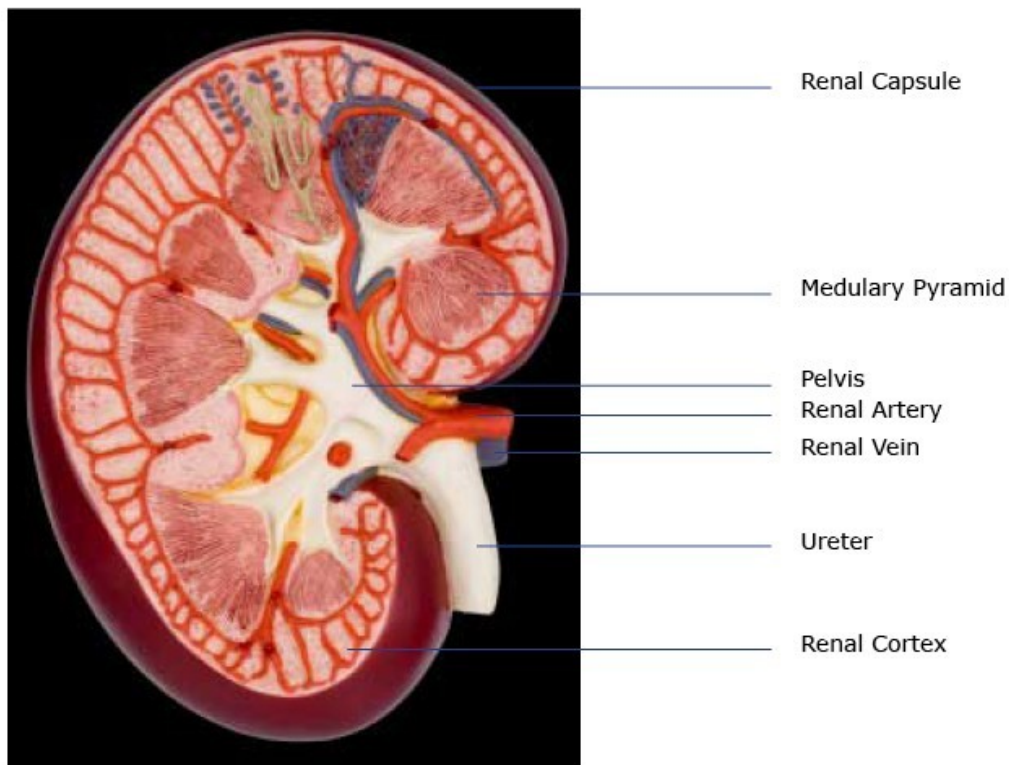


KIDNEY ANATOMY



- **RENAL CAPSULE** – outer membrane that surrounds the kidney; it is thin but tough and fibrous
- **RENAL PELVIS** – basin-like area that collects urine from the nephrons, it narrows into the upper end of the ureter
- **CALIX**– extension of the renal pelvis; they channel urine from the pyramids to the renal pelvis
- **CORTEX**– the outer region of the kidney; extensions of the cortical tissue, contains about one million blood filtering nephrons
- **NEPHRON**– these are the filtration units in the kidneys
- **MEDULLA** – inner region of the kidney contains 8-12 renal pyramids. The pyramids empty into the calyx.

- **MEDULLARY PYRAMIDS**– formed by the collecting ducts, inner part of the kidney
- **URETER** – collects filtrate and urine from renal pelvis and takes it to the bladder for urination
- **RENAL ARTERY**– branches off of the aorta bringing waste-filled blood into the kidney for filtering in the nephrons; the renal artery is further subdivided into several branches inside the kidney. Each minute, the kidneys receive 20% of the blood pumped by the heart. Some arteries nourish the kidney cells themselves.
- **RENAL VEIN** – removes the filtered blood from the kidneys to the inferior vena cava

ACTIVITY: Match in pairs the words and their definitions.